

# **TomoVision Licenses**

## User's Guide



division of  
**VIRTUAL MAGIC INC.**  
MONTREAL, CANADA

Copyright © 1997-2008 by Yves Martel  
Distribution rights by TomoVision  
ALL RIGHTS RESERVED

---

---

# 1 Introduction

TomoVision products use 2 layers of protections. A hardware layer, provided by the HASP (Hardware Against Software Piracy) dongles from Aladdin, and a software layer consisting of encrypted license activation codes stored in the dongle's memory. This document will explain how to install the hardware and software needed to run the protected applications.

## The HASP dongle

A dongle is a hardware device connected to either the USB port. The dongle used by TomoVision has its own timer and memory. All the information needed to license your products is included in the dongle, so it's easy to port your application to a new computer.

If the dongle is not present on your computer, the software will run in "demo" mode and some functions will not be available.



USB port dongle

## 1.1 SliceOmatic's licenses

### The Licenses Activation Codes

The dongles are shipped with 30 days licenses activation codes. The permanent licenses are sent by email and you must use the TomoVision\_License program to write them to the dongle's memory.

For each of TomoVision's products, you will have an Update License and at least one Module License.

### The Module License

Most of TomoVision's products are licensed by modules. Each of the modules will have a distinct Module License. A Module License can be permanent or temporary. The expiration date of a temporary license is based on the internal clock of the dongle. The local date and time of your computer have no influence on the license's expiration.

### The Update License

This license will enable you to update the version of the software. Your Module License will be valid for all new versions of the software up to the date specified by the Update License. If you install a version of the software that is newer than the expiration date of your Update License, the Module License will not be valid for this version. In this case you can either:

- Renew your support contract. Upgrades and support are available from TomoVision for a yearly fee.
- Re-install a previous version of the product. If you do not have the previous version anymore, contact TomoVision.

## 1.2 DICOMatic licenses

DICOMatic licenses work with tokens. Each action of the program will consume tokens. You buy these tokens from TomoVision. The token count is stored in a counter in the dongle's memory. When all the tokens are consumed, and the token count reaches zero, the software will only run in "demo" mode.

You can buy additional tokens and add them to the dongle at any time. TomoVision will generate a license code containing your tokens and send it to you by email. You then use the TomoVision\_License program to add these tokens to the dongle's counter.

The licenses codes are specific to a dongle and are only valid once. Using them in TomoVision\_License on an another dongle or more than once for their intended dongle will have no effect.

There are 2 types of Tokens, the **30 days tokens** and the **Permanent tokens**.

### The 30 days tokens

The dongles are always shipped with 30 days tokens. The reasons for this are twofold:

- As soon as we get a P.O., we ship the dongle with the 30 days tokens. This enables you to start working with the product immediately while the payment is handled by the accounting department of your institution.
- If the dongle gets lost in transit, we can replace it without worrying about multiple licenses being issued, since the tokens in the lost dongle will expire in 30 days anyway.

Also, when you order additional tokens, we will first send you a license code for 30 days tokens. Once we receive payment for your order, we will send you the license code for the permanent tokens by email.

As the name implies, 30 days token are only valid for 30 days. The 30 days are controlled by an internal clock in the dongle and are independent of your computer's clock. The 30 days are counted from the moment the license was generated at our office.

### The Permanent tokens

The license codes for the Permanent tokens are sent by email and you must use the TomoVision\_License program to add them to the dongle's counter.

When you add Permanent tokens to the dongle's counter, any 30 days tokens that where used will be subtracted from the Permanent token total.

### **WARNING:**

The permanent tokens must be added to the dongle's counter with the TomoVision\_License program within 30 days of their creation at our office. After that deadline, the TomoVision\_License program will reject them and you will have to contact TomoVision for replacement codes.

---

## 2 Installation of the dongle

To install the drivers and software, you will need to have the “WinZip” software on your system. “WinZip” can be found at <http://www.winzip.com>.

By default, the dongle you receive is for a standalone system. As an option you can have a network dongle that controls the licenses for multiple users of the software through the network.

### 2.1. The hardware dongle

The dongles are available either for your USB or printer port. Unless specifically asked for, the USB dongle will be sent. Plug the dongle in the port. When the dongle is firmly in place, its indicator light will turn on.

### 2.2 The dongle's device drivers

To install the HASP device driver:

- Log in as an administrator if you are running Windows NT, 2000 or XP.
- Open the HASP\_HL\_driver\_setup.zip file from TomoVision's download site. This file contains the HASPUserSetup.exe installation application.
- Run the HASPUserSetup.exe installation application (this can be done directly inside WinZIP or you can extract the file to a temporary directory and run it from there).
- Restart your computer when prompted.

# 3 The TomoVision\_License program

The TomoVision\_License program is used to read and write license codes in the HASP dongle and to generate a registration form if needed. Each dongle has a unique ID number. This unique ID is used by TomoVision when the license codes are generated, so the licenses are only valid for a specific dongle.

The TomoVision\_License program is installed automatically along with your TomoVision application. But you can also download it directly from the "Tools and drivers for the license dongle" page in the Download section of TomoVision's web site.

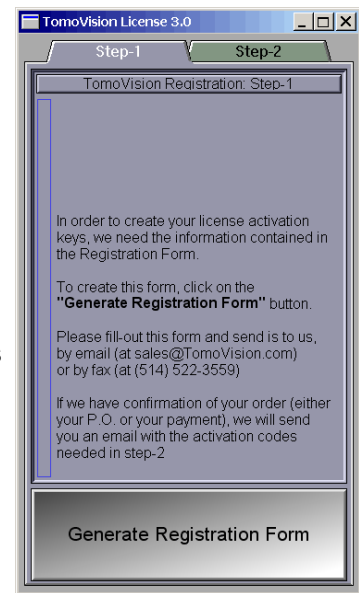
Start the TomoVision\_License program from the **start\program\TomoVision** menu.

## 3.1 Generating the Registration Form

Unless asked for by TomoVision, you do not need to generate a registration form.

If TomoVision asks for it, you should:

- Make sure the HASP dongle is connected to your computer.
- Start the TomoVision\_License program.
- Click on the "Generate Registration Form" button. This will create a registration file in the c:\temp directory. This file will be named: "TomoVision\_xxyyyzz\_reg.dat", where xxyyyzz is the current date in the form day/month/year.
- Fill out this form (you can use Windows "Notepad" or any other editor to edit the form).
- Email the form to "sales@TomoVision.com"



## 3.2 Activating the Licenses

The program "TomoVision\_License" is used to add the license tokens to the dongle's counter.

Just drag & drop the license codes file, sent to you by TomoVision, on the License program. All the license codes present in the file will be entered. The indicators on the corresponding buttons in the module list should turn yellow and the counters will be updated.

If the code is invalid or a problem has occurred, a text message will explain the reason in the text feedback window.

