

# **DICOMatic 2.0**

# **DICOM\_Watch Module**

User's Guide



division of  
**VIRTUAL MAGIC INC.**  
MONTREAL, CANADA

DICOMatic 2.0: DICOM\_Watch Module USER'S GUIDE  
rev-09/09/08

Copyright © 1997-2008 by Yves Martel  
Distribution rights by TomoVision  
ALL RIGHTS RESERVED

TomoVision  
4559 Pontiac  
Montreal, Qc  
Canada, H2J 2T2

For questions regarding DICOM\_Watch, call (514) 522-3559 or FAX (514) 522-3559 during Eastern standard time business hours, or e-mail ([support@tomovision.com](mailto:support@tomovision.com))

Information in this document is subject to change without notice and does not represent a commitment on the part of TomoVision, Virtual Magic Inc.

TomoVision, readOmatic and DICOMATIC are registered trademark of Magie Virtuelle Inc.

UNIX is a registered trademark of UNIX System Laboratories Inc.

Windows and Microsoft are registered trademarks of Microsoft Corp.

**DISCLAIMER:**

**Good data processing procedure dictates that any program be thoroughly tested with non-critical data before relying on it.** The user must assume the entire risk of using the program.

Virtual Magic Inc. makes no representation or warranty with respect to the adequacy of readOmatic for any particular purpose or with respect to its adequacy to produce any particular results. In no events shall Virtual Magic Inc., its employees or its suppliers be liable for special, direct, indirect or consequential damages, losses, costs, changes, claims, demands, or claim for lost profits, fees, or expenses of any nature.



# Table of Contents

<b>1 Introduction</b> .....	<b>1</b>
<b>2 Installation</b> .....	<b>3</b>
2.1 Updates .....	4
2.2 Uninstall .....	4
<b>3 The Licenses</b> .....	<b>5</b>
3.1 The HASP dongle .....	5
3.2 The License Tokens .....	5
3.2.1 The 30 days tokens .....	6
3.2.2 The Permanent tokens .....	6
3.3 The TomoVision_License program .....	6
3.3.1 Generating the Registration Form .....	7
3.3.2 Activating the Licenses .....	7
3.4 This Module's token usage .....	8
<b>4 How does it work?</b> .....	<b>9</b>
4.2 Loop .....	9
4.3 Image criteria .....	9
4.4 Conversion to DICOM .....	9
4.5 The Push to DICOM server and the "Done" directory .....	10
4.6 The "Kept" and "Failed" directories .....	10
<b>5 Operation</b> .....	<b>11</b>
5.1 Starting the program .....	11
5.1.1 From the "Start" menu or the program's icon .....	11
5.1.2 From the command line .....	11
5.2 The DICOM_Watch.ini file .....	11
5.3 The Configuration window .....	12
5.3.1 The "General parameters" page .....	13
5.3.2 The "Fetch images from FTP servers" page .....	14
5.3.3 The "Accept images from DICOM network" page .....	15
5.3.4 The "Watched" directory page .....	16
5.3.5 The "Modality Worklist" page .....	17
5.3.6 The "DICOM conversion parameters" page .....	19
5.3.7 The "Failed" directory page .....	21
5.3.8 The "Kept" directory page .....	21
5.3.9 The "Saved" directory page .....	22
5.3.10 The "Push DICOM images to DICOM network" page .....	23
5.3.11 The "Push DICOM images to DICOM printer" page .....	24
5.3.12 The "Push DICOM images to FTP servers" page .....	25

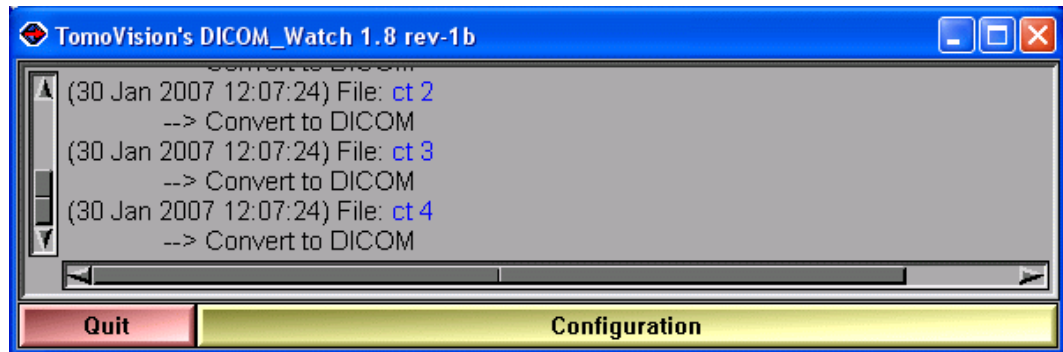
<b>6 The DICOM_Watch.ini file</b> .....	<b>27</b>
6.1 The syntax .....	27
6.2 Page 1: General configuration parameters .....	27
6.3 Page 2: FTP Pull parameters .....	28
6.4 Page 4: The Watched directory parameters .....	29
6.5 Page 5: The Modality Worlist parameters .....	30
6.6 Page 6: The conversion parameters .....	31
6.7 Page 7: The “Kept” directory parameters .....	32
6.8 Page 8: The “Failed” directory parameters .....	32
6.9 Page 9: The “Saved” directories .....	32
6.10 Page 10: The DICOM Push parameters .....	33
6.11 Page 11: The DICOM Print parameters .....	34
6.12 Page 12: The FTP Push parameters .....	34
<b>Appendix A: Using command line arguments</b> .....	<b>37</b>
A.1 Start the program from a DOS Prompt .....	37
A.2 Start the program from the “Run” window .....	37
A.3 Start the program from a shortcut .....	37
<b>A.4 This module’s command line arguments</b> .....	<b>38</b>
Appendix B: template character replacements .....	39

---

# 1 Introduction

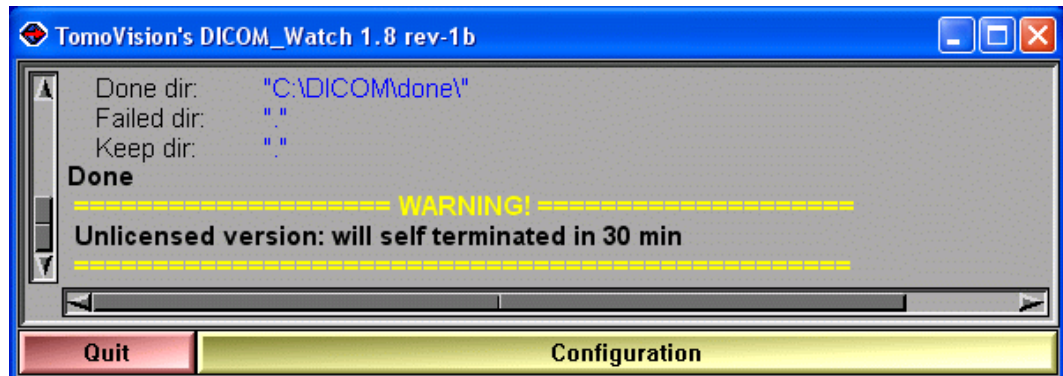
DICOM\_Watch is a product designed to help automate the conversion of medical images from older file format to the DICOM format. It can be used to interface an older non-DICOM scanner with the PACS, or to convert the entire content of a directory automatically.

DICOM\_Watch works in conjunction with DICOMatic and also an optional DICOM Push program (you have a choice of 2 free softwares that will work with DICOM\_Watch).



## The licenses

To use DICOM\_Watch, you need a license "dongle" (USB key) and a license activation key. Without these, DICOM\_Watch will nevertheless work, but it will self terminate after 30 minutes.



But even with these restrictions, you should be able to fully evaluate if the program answers your needs.



## 2 Installation

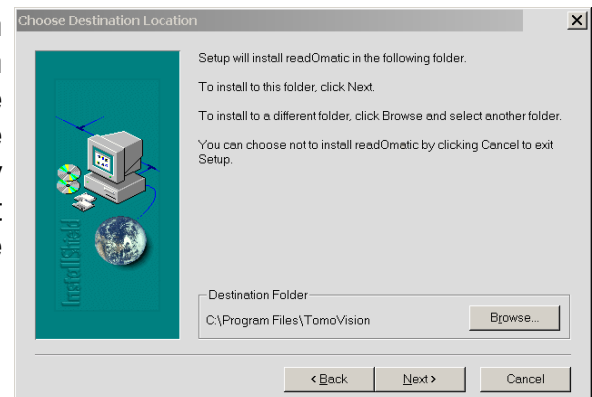
If you have the program's CD, just inserting the CD in the drive should start the installation script. In the absence of the CD, you can install the software directly from the download page at the Web site <http://www.TomoVision.com>.

### Note:

To install the software from the Web pages, you will need to have the "WinZip" software on your system. "WinZip" can be found at <http://www.winzip.com>.

To install the software directly from WinZip, click on the "Install" button in the WinZip interface. Alternatively, you can unzip the files from the ".zip" archive to a temporary directory and click on the "setup.exe" icon to start the installation program.

By default, readOmatic will be installed in the C:\Program Files\Tomovision directory. If you want the program to be installed somewhere else, you will have the option to select the desired directory during installation. You should not change the program's location after the installation.



### Note:

if you want DICOMatic to work in conjunction with DICOM\_Watch, both program have to be installed in the same directory. DICOMatic is needed for DICOM\_Watch to work.

### Note:

If you want to use the "Push to DICOM Printer" option, you need to install a DICOM print software in the same directory as DICOM\_Watch. Presently DICOM\_Watch can only work with "dcmpsprt" from OFFIS. This softwares is free. You can get it from the OFFIS Web site at: <http://dicom.offis.de/dcmtdk.php.en>.

## 2.1 Updates

New versions of the program are regularly placed on the web site. You should visit the web site periodically to make sure you have the latest version.

To install a newer version of the software, follow the “First Install” instructions, and install the new version in the same directory as the old one. This will overwrite the old program with the new one. You do not need to uninstall the old version.

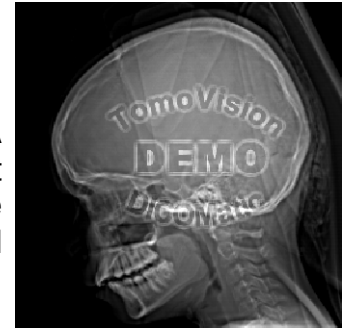
## 2.2 Uninstall

To uninstall the software, use the Windows “Add/Remove Programs” application in the normal manner.

---

## 3 The Licenses

TomoVision products use 2 layers of protections. A hardware layer, provided by the HASP (Hardware Against Software Piracy) dongles from Aladdin, and a software layer consisting of encrypted license activation codes and a token counter stored in the dongle's memory.



### 3.1 The HASP dongle

A dongle is a hardware device connected to the USB port. The dongle used by TomoVision has its own timer and memory. All the information needed to license your products is included in the dongle, so it's easy to move your application to a new computer.

If the dongle is not present on your computer, or if its drivers are not installed, the software will run in "demo" mode and some functions will not be available.



HASP dongle for the USB port

### 3.2 The License Tokens

DICOMatic licenses work with tokens. Each action of the program will consume tokens. You buy these tokens from TomoVision. The token count is stored in a counter in the dongle's memory. When all the tokens are consumed, and the token count reaches zero, the software will only run in "demo" mode.

You can buy additional tokens and add them to the dongle at any time. TomoVision will generate a license code containing your tokens and send it to you by email. You then use the TomoVision\_License program to add these tokens to the dongle's counter.

The licenses codes are specific to a dongle and are only valid once. Using them in TomoVision\_License on another dongle or more than once for their intended dongle will have no effect.

There are 2 types of Tokens, the **30 days tokens** and the **Permanent tokens**.

### 3.2.1 The 30 days tokens

The dongles are always shipped with 30 days tokens. The reasons for this are twofold:

- As soon as we get a P.O., we ship the dongle with the 30 days tokens. This enables you to start working with the product immediately while the payment is handled by the accounting department of your institution.
- If the dongle gets lost in transit, we can replace it without worrying about multiple licenses being issued, since the tokens in the lost dongle will expire in 30 days anyway.

Also, when you order additional tokens, we will first send you a license code for 30 days tokens. Once we receive payment for your order, we will send you the license code for the permanent tokens by email.

As the name implies, 30 days token are only valid for 30 days. The 30 days are controlled by an internal clock in the dongle and are independent of your computer's clock. The 30 days are counted from the moment the license was generated at our office.

### 3.2.2 The Permanent tokens

The license codes for the Permanent tokens are sent by email and you must use the TomoVision\_License program to add them to the dongle's counter.

When you add Permanent tokens to the dongle's counter, any 30 days tokens that where used will be subtracted from the Permanent token total.

#### **WARNING:**

The permanent tokens must be added to the dongle's counter with the TomoVision\_License program within 30 days of their creation at our office. After that deadline, the TomoVision\_License program will reject them and you will have to contact TomoVision for replacement codes.

## 3.3 The TomoVision\_License program

The TomoVision\_License program is used to read and write license codes in the HASP dongle and to generate a registration form if needed. Each dongle has an unique ID number. This unique ID is used by TomoVision when the license codes are generated, so the licenses are only valid for a specific dongle.

The TomoVision\_License program is installed automatically along with your TomoVision application. But you can also download it directly from the “Tools and drivers for the license dongle” page in the Download section of TomoVision’s web site.

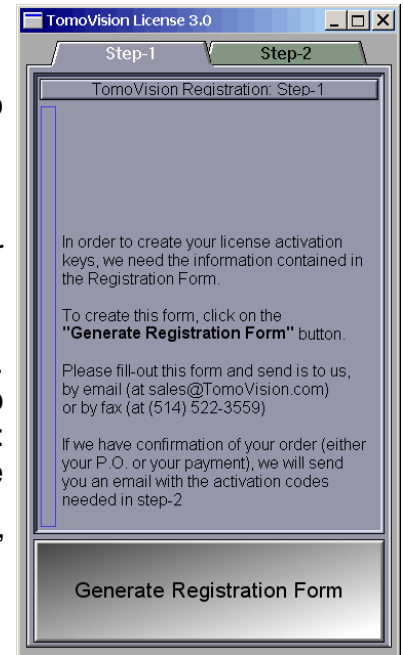
Start the TomoVision\_License program from the **start\program\TomoVision** menu.

### 3.3.1 Generating the Registration Form

Unless asked for by TomoVision, you do not need to generate a registration form.

If TomoVision asks for it, you should:

- Make sure the HASP dongle is connected to your computer.
- Start the TomoVision\_License program.
- Click on the “Generate Registration Form” button. This will create a registration file in the c:\temp directory. This file will be named: “TomoVision\_xxyyyzz\_reg.dat”, where xxyyyzz is the current date in the form day/month/year.
- Fill out this form (you can use Windows “Notepad” or any other editor to edit the form).
- Email the form to “sales@TomoVision.com”

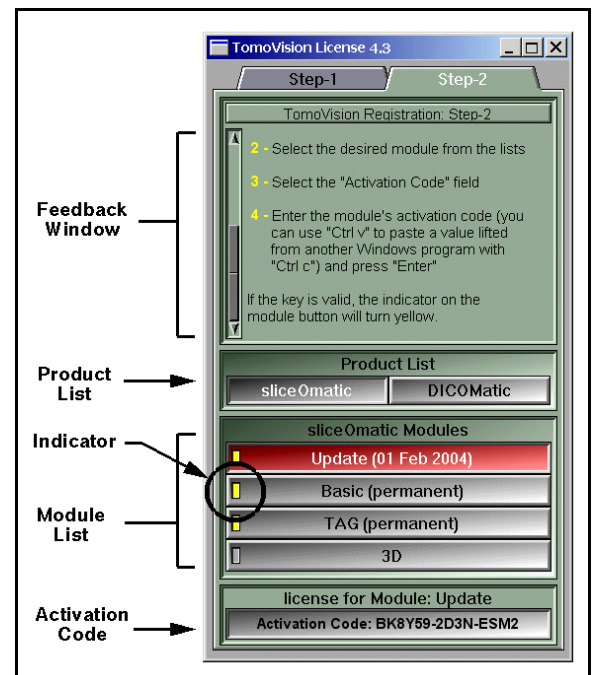


### 3.3.2 Activating the Licenses

The program “TomoVision\_License” is used to add the license tokens to the dongle’s counter.

Just drag & drop the license codes file, sent to you by TomoVision, on the License program. All the license codes present in the file will be entered. The indicators on the corresponding buttons in the module list should turn yellow and the counters will be updated.

If the code is invalid or a problem has occurred, a text message will explain the reason in the text feedback window.



## 3.4 This Module's token usage

While running, DICOM\_Watch will consume 10 tokens per hours.

DICOM\_Watch also use the conversion module of DICOMatic to convert the images from their original format to DICOM. This conversion will consume tokens.

Each image file converted will use one token.

However, if a file contains multiple images, then the module may use more than one token depending on the number of images and their size in pixels. The module will use 1/16 of token for each image of 64x64 pixels or smaller, 1/4 of token for images between 64x64 and 128x128 pixels and 1 token each for bigger images. The resulting count will be rounded up to the next integer.

---

# 4 How does it work?

## 4.2 Loop

Once DICOM\_Watch is activated, it will periodically look in the “**Watched**” directory for any image files it can find. One of the parameters in the DICOM\_Watch.ini file selects the delay between each scan. If this delay is set to 0, then the program will scan the directory only once and exit. This may be useful if you want to extract images from a media such as a CD.



## 4.3 Image criteria

For each image in the “**Watched**” directory, if the image matches a number of criteria defined in the DICOM\_Watch.ini file, the image will be sent to DICOMatic for conversion. The idea behind these criteria is that we do not want to send an image to DICOMatic if this image is still being transferred on the PC by the scanner. The criteria are there to insure that the file transfer is complete. The criteria used to accept a file are:

- **Template** The file name must match the specified template. This template use the UNIX syntax for character replacements.
- **Exclusive** The file should not be presently opened by any other application. Typically, if the file is still being transferred, it will also be opened by the transfer program.
- **Age** The file must be at least “n” seconds old. Transfer programs seldom take more than a few seconds. Fixing this value high enough ensures that the transfer is complete.
- **Size** The file must be at least “n” bytes in size. If the image file are not compressed, you should have a good idea of their minimum size.

## 4.4 Conversion to DICOM

The accepted images files are then sent to DICOMatic for conversion to DICOM.

## 4.5 The Push to DICOM server and the “Done” directory

If the conversion is successful, the converted images are either saved in the “**Done**” directory or pushed to the DICOM network.

If the images are saved in the “**Done**” directory, you have the option of renaming the converted files using information from its content. The new name will have the syntax: `Exxxx_Syyy_Izzzz`

“E” (for Exam) followed by the exam’s ID or number

“S” (for series) followed by the series’ number

“I” (for Image) followed by the image’s number.

If there is more than one acquisition, the “I” character is replaced by a single upper-case letter representing the acquisition number (A = acquisition 1, B = acquisition 2...).

If the images are saved in the “**Done**” directory, you also have the option of creating up to 2 levels of subdirectories when the file is saved. You can create a first subdirectory for each study and a second for each series in a study. The name of the study directory can be the Patient’s name, the Patient’s ID or the Study ID. The name of the series subdirectory is the series’ ID number.

If the images are pushed to a DICOM server, you can define up to 4 servers. The images will be pushed to each of these. Also, if the OFFIS’ “dcmprst” program has been detected in the installation directory, the images will be sent to a DICOM printer via this program.

## 4.6 The “Kept” and “Failed” directories

A copy of the original image can also be preserved in the “**Kept**” directory, otherwise it is deleted. If the conversion is unsuccessful, the original image is moved to the “**Failed**” directory.



---

# 5 Operation

## 5.1 Starting the program

### 5.1.1 From the “Start” menu or the program’s icon

DICOM\_Watch can be started from the menus under “Start, Programs, Tomovision”. Alternatively, you can start the program by clicking on its icon.



### 5.1.2 From the command line

You can use optional command line arguments when you start DICOM\_Watch. See Appendix C: “Command line arguments” for more information on this subject.

## 5.2 The DICOM\_Watch.ini file

All of the program’s configurations can be controlled with the DICOM\_Watch.ini file.

There can be 2 copies of this file: one is in the installation directory (by default: C:\Program Files\TomoVision), the other is in the user’s environment space (on XP: C:\Documents and Settings\*user\_name*\Application Data\TomoVision, where *user\_name* is the current user).

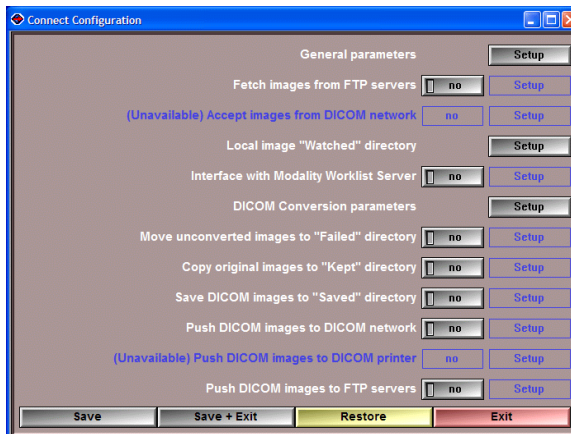
The program will read the copy in the installation directory first, and then, if the file is present, read the copy in the user’s environment space.

The “Config” button can be used to modify the values of the DICOM\_Watch.ini file in the user’s environment space.

For a more detailed discussion of the DICOM\_Watch.ini file, please refer to Section 6.

## 5.3 The Configuration window

The behavior of the DICOM\_Watch module is controlled by the DICOM\_Watch.ini file. There are 2 copies of this file. The first copy in the installation directory (c:\Program Files\TomoVision) is used for default values. The second copy, in the user's "Documents and Settings" directory, can be modified interactively through the Configuration window.



The exact syntax and content of the ".ini" file is discussed in more details in Section 6.

The main page of the Configuration window give you access to 12 sub-pages. Each of these is used to set the parameters for a specific task. Some of these tasks can be turned off. If the task is off, then the sub-page is not needed and is not accessible.

Both DICOM\_Watch and the Connect modules share the same configuration interface. Some option sub-pages are only available in one of these modules.

**Save** Save the new changes to the .ini file in the user's "Documents and Settings" directory.

**Save + Exit** Save the new changes to the .ini file and close the Configuration window.

**Restore** Reset all the parameters to their values found in the .ini file in the installation directory.

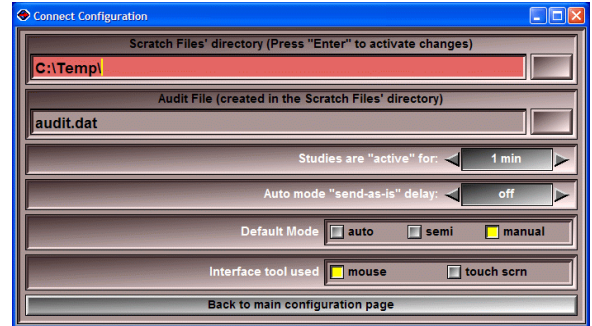
**Exit** Close the Configuration window without saving the new changes to the .ini file. The changes will only be applied to this session of Connect.

### Note:

Even if not saved, all change done in the configuration will be used by the current session of the program.

### 5.3.1 The “General parameters” page

This page enables you to modify some of the parameters that are not specific to one task in particular.



#### **Scratch files' directory**

Any temporary, trace and audit files created by the program will be created in this directory.

#### **Audit file**

An “AUDIT” trail of all the actions performed on the images will be appended at the end of this file.

#### **“active” parameter**

If all the files in a study are older than this delay, once the study is transferred, it is considered finished and removed from the “Current Transfer” list. However, if one or more of the images have been created within the delay, the study is considered still active, and it is possible that other files from the same study will appear in the “Watched” directory.

#### **“Send-as-is” delay**

In auto mode, Connect tries to match studies with the Modality Worklist. If no match is found and the image is older than the delay, then it is sent “as is” without the complementary information that could have been provided by the Modality Worklist. Otherwise, the program waits until the file is older than the delay to give a chance to the Modality Worklist to catch up. Of course if you do not use the Modality Worklist, you can set this delay to 0.

#### **Default mode**

Set the default startup mode for Connect.

#### **Interface tool used**

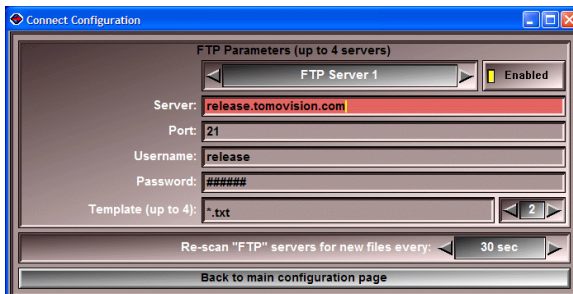
The program can be used either with a mouse or a touch screen.

### 5.3.2 The “Fetch images from FTP servers” page

**Note:**

This page is only available in the Connect Module.

This page enables you to set the parameters necessary for the FTP pull operation. The program can retrieve images from up to 4 FTP servers. For each of these, it can retrieve files matching up to 4 different templates. This can be used to fetch images with different extensions, or from different directories.



**Server selection** You can enable or disable each of the 4 server locations. If a server is enabled, the program will query this server repeatedly, at the interval specified, to fetch any new images matching the specified templates. A list of files already extracted from each server is kept in the scratch directory (by default C:\temp).

**Server** The name (or IP address) of the computer running the FTP server

**Port** The port number used by the FTP server

**Username** The login name of the user

**Password** The password for the user

**Template** For each server you can access up to 4 templates. If the desired images are on a subdirectory, the template must have this directory path. (Ex: dir\_1\sub\_dir\_1\\*.ima). This will enable you to retrieve images from up to 4 different directories on the same scanner. This template uses the UNIX syntax for character replacements (See Appendix B).

**WARNING:**

The password specified in the “passwd” field will not be visible in this interface. However, it will be visible in the .ini file.

### 5.3.3 The “Accept images from DICOM network” page

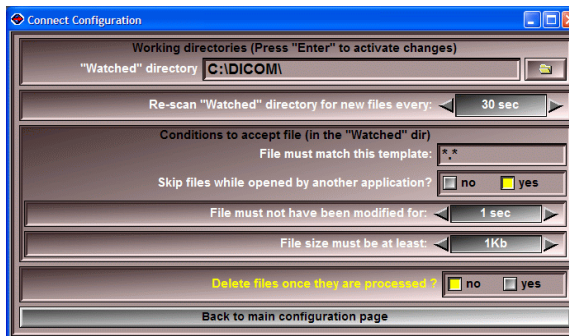
**Note:**

This option is currently unavailable.

This option is currently unavailable, however, if you desire to receive images from the DICOM network and have Connect use them, we suggest you install OFFIS tool “storescp” in the “Watched” directory and let it run in the background. It will act as a DICOM server and place all the images it receives directly in the “Watched” directory.

### 5.3.4 The “Watched” directory page

This page specifies the location of the “Watched” directory. The program will periodically scan this directory for any new files. To prevent the program from processing files that are still incomplete, a set of conditions can be imposed before a file is accepted.



#### “Watched” directory

Path to the “Watched” directory. You must press the enter key for the path to be accepted. You can use the folder button to browse existing directories.

#### Rescan delay

The program looks in the “Watched” directory every “n” seconds. You can select the value of “n” here. If n=0, the program will look in the “Watched” directory only once.

**Conditions to accept files** You can use the following criteria to limit the files that are processed.

**Template** The file must match the template. This template uses the UNIX syntax for character replacements (See Appendix B).

**Exclusive** The file should **not be opened by any other application**. Typically, if the file is still being transferred, it will also be opened by the transfer program.

**Age** The file **must not have been modified for** at least “n” seconds. Transfer programs seldom take more than a few seconds. Fixing this value high enough ensures that the transfer is complete. The value “off” (=0 in the .ini file) disables this criterion.

**Size** The **file must be at least** “n” bytes in size. If the image files are not compressed, you should have a good idea of their minimum size. The value “off” (=0 in the .ini file) disables this criterion.

**Delete files once they are processed** After a file is being processed, it can be deleted from the “Watched” directory.

#### **WARNING:**

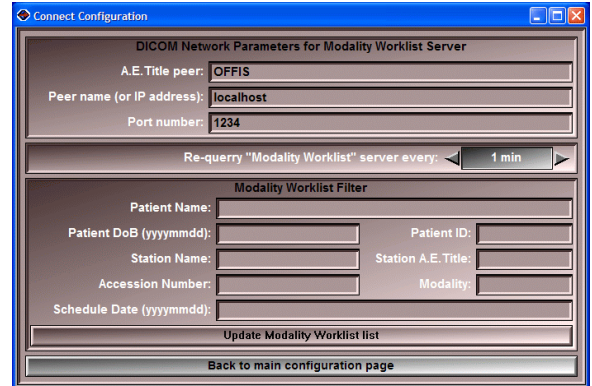
If the “Watched” directory is read-only (such as a CD), or a directory that you would want to be “write protected”, you must set “Delete files once they are processed” flag to “no”.

### 5.3.5 The “Modality Worklist” page

**Note:**

This page is only available in the Connect Module.

This page enables you to specify a Modality Worklist Server. If such a server is specified, then the program will query it at fixed intervals and create a list of entries that can be matched with the studies in the “Watched” directory. You can use the “filter” parameters to limit the entries in the list.



**DICOM Network Parameters**

The parameters you enter here will be used to access the Modality Worklist server.

**A.E.T. peer**

This is the name (Application Entity Title) of the Modality Worklist. Your PACS may need this name to be correct in order to accept the images. Please consult your local PACS administrator if you need this information.

**Peer name**

Name or URL of the computer running the Modality Worklist server.

**Port Number**

The port on the PC used to establish the communication. By default, DICOM uses the port 104.

**Note:**

The A.E.T. sender name is specified in the DICOM push parameter page.

**Rescan delay**

The program queries the Modality Worklist server every “n” seconds. You can select the value of “n” here.

**Modality Worklist Filter**

When Connect queries the Modality Worklist server, it can specify filters to limit the number of answers to the query. If a filter is left

empty, it will not be used to filter the Modality Worklist entries. The information entered in each filter will be sent to the Modality Worklist Filter.

The filters you can use are: **Patient Name, Patient DoB, Patient ID, Station Name, Station A.E.Title, Accession Number, Modality, Schedule Date.**

**Note:**

Please refer to your Modality Worklist instructions to know which of these fields it can use and the exact syntax it supports.

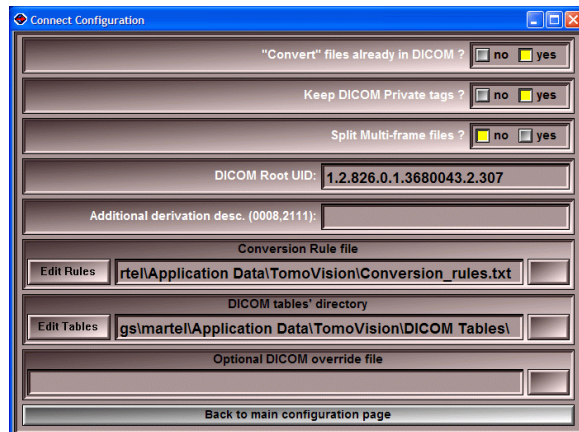
**Update Modality Worklist List**

This will cause Connect to re-query the Modality Worklist server using the newly specified parameters



### 5.3.6 The “DICOM conversion parameters” page

This page is used to specify the parameters used in the DICOM conversion. All these options are described in more detail in the DICOMatic Conversion Module’s manual.



#### Keep DICOM private tags?

If the original image has private tags, these can be removed or preserved in the converted image.

#### Split Multi-frame files?

Some DICOM modalities support multi-frame files. If the original file contains multi-frame, the program can attempt to create a multi-frame DICOM file.

#### DICOM Root UID

The root UID used by the program to create most of the image’s UID. By default, this value is TomoVision’s UID. You can replace it by your enterprise UID if you have one.

#### Additional derivation description

The program will append “converted from xxx by DICOMatic 2.0 rev-zz” to the derivation description tag (0008,2111). If you want to add more information, any text you enter here will be appended after the DICOMatic message.

#### Conversion Rules file

The path to the user’s “Conversion Rules” file used by the program. By default, this will be the “conversion\_rules.txt” file in the user’s “Documents and Settings” directory (“C:\Documents and Settings\user name\Application Data\TomoVision”)

The “Edit Rules” button enables you to modify the rules file. Please refer to the DICOMatic Conversion Module manual for a detailed description of this option (section 5.3.2 The “Conversion Rules” page).

#### DICOM tables’ directory

The path to the DICOM tables used by the program. By default, this will be the “DICOM Tables” directory in the user’s

“Documents and Settings” directory (“C:\Documents and Settings\*user name*\Application Data\TomoVision”)

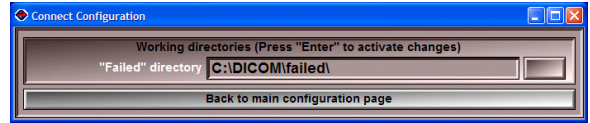
The “Edit Tables” button enables you to modify the rules file. Please refer to the DICOMatic Conversion Module manual for a detailed description of this option (section 5.3.3 The “DICOM Modality” page).

**Optional DICOM override file**

This file, using the DICOM Attribute table syntax, can be used to modify the DICOM tag values created. It will be read before any other DICOM table. You can use it, for instance, to anonymize your images: just have the “DICOM override file” parameter point to a file with override values for the patient name, ID, and any other TAG you want anonymized.

### 5.3.7 The “Failed” directory page

This page is used to specify the “Failed” directory. If the conversion process fails, either a copy, or the original image itself, will be placed in this directory. If the “Delete files once processed” flag in the “Watched” page is set, the original image will be moved, otherwise, a copy of the original will be created.

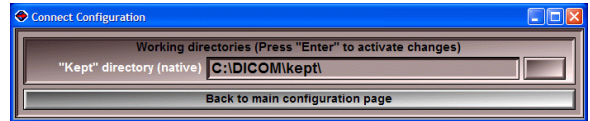


#### “Failed” directory

Path to the “Failed” directory. You must press the Enter key for the path to be accepted. You can use the folder button to browse existing directories. If you specified a non-existing directory, the program will ask permission to create it.

### 5.3.8 The “Kept” directory page

This page is used to specify the “Kept” directory. If the conversion worked, either a copy, or the original image itself, will be placed in this directory. If the “Delete files once processed” flag in the “Watched” page is set, the original image will be moved, otherwise, a copy of the original will be created.

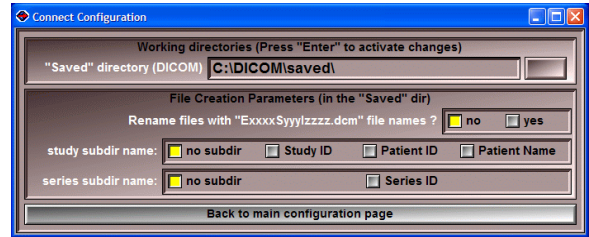


#### “Kept” directory

Path to the “Failed” directory. You must press the Enter key for the path to be accepted. You can use the folder button to browse existing directories. If you specified a non-existing directory, the program will ask permission to create it.

### 5.3.9 The “Saved” directory page

This page is used to specify the “Saved” directory. If the conversion worked, a copy of the converted DICOM image will be placed in this directory.



#### “Saved” directory

Path to the “Saved” directory. You must press the Enter key for the path to be accepted. You can use the folder button to browse existing directories. If you specified a non-existing directory, the program will ask permission to create it.

#### File Creation Parameters

By default, the converted files will all be placed in the same directory and they will have the same name as the original but with the “.dcm” extension. You can change this with the following options:

##### Rename files

The program can rename the converted files using information from its content. The new name will have the syntax: Exxxx\_Syyy\_Izzzz

“E” (for Exam) followed by the exam’s ID or number

“S” (for series) followed by the series’ number

“I” (for Image) followed by the image’s number.

If there is more than one acquisition, the “I” character is replaced by a single upper-case letter representing the acquisition number (A = acquisition 1, B = acquisition 2...).

##### Subdir per study

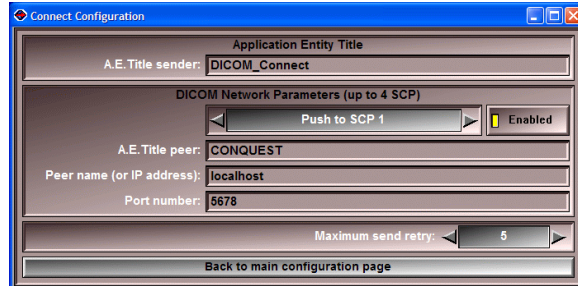
The program can create a new subdirectory for each study. The name of this subdirectory can be: the Patient’s name, the Patient’s ID or the Study’s ID.

##### Subdir per series

The program can create a new subdirectory for each series.

### 5.3.10 The “Push DICOM images to DICOM network” page

This page enables you to setup the parameters needed for the program to push the converted images on the DICOM network. You can push the image to up to 4 servers.



#### Application Entity Title

**A.E.T. sender** The “Application Entity Title” of the sender. This is the name you give to the sending application. By default it is “Connect”.

#### Note:

The A.E.T. sender name you give here will also be used for the Modality Worklist server.

#### DICOM Network Parameters

The parameters you enter here will be used to access the 4 SCP servers to which the program can “push” images.

**Server selection** You can push the images to up to 4 different servers.

**A.E.T. peer** This is the name (Application Entity Title) of the SCP receiving the images. Your PACS may need this name to be correct in order to accept the images. Please consult your local PACS administrator if you need this information. By default it is “ANY-SCP”.

**Peer name** Name or URL of the computer where you send the images.

**Port Number** The port on the PC used to establish the communication. By default, DICOM uses the port 104.

#### Maximum Send retry

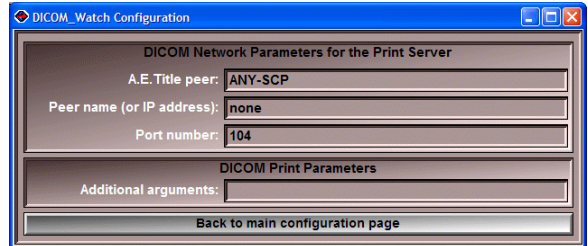
If the DICOM Push operation failed, the program will attempt it again for a maximum of “Maximum send retry” times.

### 5.3.11 The “Push DICOM images to DICOM printer” page

**Note:**

This page is only available in the DICOM\_Watch Module.

This page enables you to setup the parameters needed to send the images to a DICOM printer.



#### DICOM Network Parameters

The parameters you enter here will be used to access the DICOM printer.

**A.E.T. peer**

This is the name (Application Entity Title) of the DICOM printer. Your PACS may need this name to be correct in order to accept the images. Please consult your local PACS administrator if you need this information.

**Peer name**

Name or URL of the printer server.

**Port Number**

The port on the PC used to establish the communication. By default, DICOM uses the port 104.

**Note:**

The A.E.T. sender name is specified in the DICOM push parameter page.

**DICOM Print Parameters** Everything in this field will be sent “as is” to the “dcmprsr” program.

**Note:**

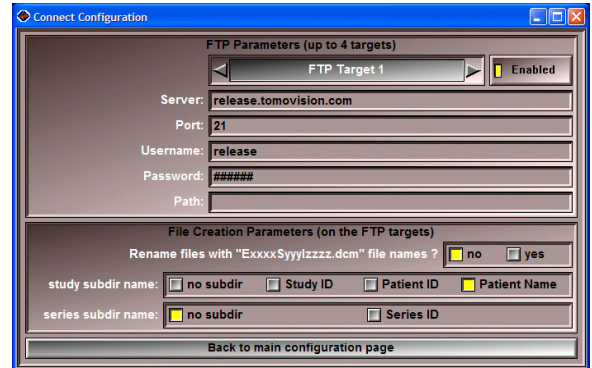
The “DICOM Print” option is implemented using the “dcmprsr” program from OFFIS. This program must be present in the same directory as DICOM\_Watch for this option to work (by default: c:\Program Files\TomoVision). For more information on “dcmprsr”, please refer to OFFIS’ documentation.

### 5.3.12 The “Push DICOM images to FTP servers” page

**Note:**

This page is only available in the Connect Module.

This page enables you to set the parameters necessary for the FTP push operation. Connect can push converted images from up to 4 FTP servers. These files can be renamed and placed in a subdirectory if desired.



**Server selection** You can enable or disable each of the 4 server locations. If a server is enabled, the program will push the converted images to this server.

- Server** The name (or IP address) of the computer running the FTP server
- Port** The port number used by the FTP server
- Username** The login name of the user
- Password** The password for the user
- Path** The directory where the images are to be placed on the FTP server.

**WARNING:**

The password specified in the “passwd” field will not be visible in this interface. However, it will be visible in the .ini file.

**File Creation Parameters** By default, the converted files will all be placed in the specified directory and will have the same name as the original but with the “.dcm” extension. You can change this with the following options:

- Rename files** The program can rename the converted files using information from its content. The new name will have the syntax: Exxxx\_Syyy\_Izzzz
- “E” (for Exam) followed by the exam’s ID or number  
“S” (for series) followed by the series’ number  
“I” (for Image) followed by the image’s number.
- If there is more than one acquisition, the “I” character is replaced by a single upper-case letter representing the acquisition number (A = acquisition 1, B = acquisition 2...).
- Subdir per study** The program can create a new subdirectory for each study. The name of this subdirectory can be: the Patient’s name, the Patient’s ID or the Study’s ID.
- Subdir per series** The program can create a new subdirectory for each series.



---

## 6 The DICOM\_Watch.ini file

The DICOM\_Watch.ini file is used to set a number of the program's internal variables.

The program can read this file from two different locations. The first is in the installation directory (by default: "C:\Program Files\TomoVision"). The second (if present) is in the user's "Documents and Settings" directory (by default in XP: "C:\Documents and Settings\*user name*\Application Data\TomoVision"). If a parameter is defined in both versions of the file, the one in the user's "Documents and Settings" version will be used.

### 6.1 The syntax

- everything on a line following a ";" character is a comment and will not be read by the program
- the lines are composed of a keyword, followed by a "=", followed by an argument.
- arguments containing spaces must be protected by quotes (example: `scratch = "C:\name with spaces must be quoted"`)
- the keywords are not case sensitive, but the arguments are.

### 6.2 Page 1: General configuration parameters

`scratch = dir_name`

Set the name of the directory used for temporary and trace files to "*dir\_name*" (Default value is C:\temp).

`audit = file_name`

Set the name of the audit trace file. This file will be created in the scratch directory. If this parameter is not defined, no audit file will be created. (Default value is "TomoVision\_Audit.txt").

`trace = value`

Starting trace level value (between 0 and 5) (Default value is 0).

## 6.3 Page 2: FTP Pull parameters

*sleep\_ftp = value* Sleep delay between FTP server rescan (in sec). The program will scan the FTP servers and pull all the images matching the templates every "sleep\_ftp" sec. (Default value is 30).

The program can pull images from 4 FTP servers. The following parameters are defined for each of these. Replace "n" by 1, 2, 3 or 4.

*ftp\_in\_on\_n = flag* Enable (=1) or disable (=0) each of the 4 FTP pull operations individually. (Default value is 0).

*ftp\_in\_server\_n = string* Name or URL address of the target FTP server.

*ftp\_in\_port\_n = value* Port used by the FTP server.

*ftp\_in\_username\_n = string* User name used to login in the server.

*ftp\_in\_password\_n = string* Password used to login in the server.

For each FTP server, the program can use 4 templates to pull these images. These templates can be used to extract images from different directories, or with different names or extensions. Replace "m" by 1, 2, 3 or 4.

*ftp\_in\_template\_n\_m = string* Template used to extract the images.

### **WARNING:**

The password is not encrypted. Anybody who can read the .ini file will have access to the password information.

## 6.4 Page 4: The Watched directory parameters

<code>watch_dir = dir_name</code>	"Watched" directory name.
<code>sleep_watch_dir = value</code>	Sleep delay between "Watched" directory rescan (in sec). The program will scan the "Watched" directory for new images every "sleep_watch_dir" sec. (Default value is 30).

The following conditions are used to prevent the conversion of files that are still in transit between the scanner and the PC.

<code>exclusive = flag</code>	Exclusive access condition (0/1 flag). To be converted a file must not be opened by any other application. (Default value is 0)
<code>age = value</code>	Age condition (in sec). To be converted, a file must be older than "age" sec. (i.e. it must not have been written to in the last "age" sec.) This is to prevent the program from converting files that are still in transit. A value of 0 disables this condition. (Default value is 30 sec)
<code>size = value</code>	Size condition (in bytes). To be converted a file must be at least "size" bytes in size. A value of 0 disables this condition. (Default value is 1024 bytes)
<code>watch_template = template</code>	To be converted a file must match this template. (Default template is "*.*)"
<code>delete = flag</code>	Delete processed files flag. If set the files will be deleted from the "Watched" dir after being processed (converted, saved or pushed).

### WARNING:

If the "Watched" directory is a read-only media (CD or DVD), or from a directory where you do not want to delete any files (such as the scanner's console database), you need to set this flag to 0.

## 6.5 Page 5: The Modality Worklist parameters

*sleep\_worklist = value*      Sleep delay between Modality Worklist queries (in sec). The program will query the Modality Worklist server every "sleep\_worklist" sec. (Default value is 60).

The program can query one Modality Worklist server.

*worklist\_on = flag*      Enable (=1) or disable (=0) the Modality Worklist server query. (Default value is 0)

*worklist\_AET = string*      Application Entity Title of the Modality Worklist server. (Default value is ANY\_SCP)

*worklist\_peer = string*      Name of the Modality Worklist server's computer. It can also be the URL address of the server. (Default value is "unknown")

*worklist\_port = value*      Port used by the Modality Worklist server. (Default value is 104)

You can limit the number of entries returned by the Modality Worklist query by using filters. Please consult your Modality Worklist manual for the filters that are supported and their syntax.

*filter\_patient\_name = string*

*filter\_patient\_id = string*

*filter\_modality = string*

*filter\_station\_aet = string*

*filter\_station\_name = string*

*filter\_accession = string*

## 6.6 Page 6: The conversion parameters

<i>derivation= string</i>	This string is appended at the end of the derivation description (tag (0008,2111))
<i>passthrough= value</i>	When value=1, if possible, any private tag present in the source file will be preserved in the output file. If value=0, the private tags will not be copied to the output file.
<i>root_uid= string</i>	All UIDs (Unique Identification Numbers) created in DICOMatic start with this prefix value. (Default value is 1.2.826.0.1.3680043.2.307)
<i>tables= name</i>	Set the name of the subdirectory where the DICOM tables are stored in the user's "Documents and Settings" directory. (default value is "DICOM Tables")
<i>rules= file_name</i>	Set the name of Conversion Rules file in the user's "Documents and Settings" directory. (Default value is "conversion_rules.txt")
<i>override= file_name</i>	Give the name of an optional "override" DICOM table file. This file, using the DICOM Attribute table syntax (see section 8.2), can be used to modify the DICOM tag values created. It will be read before any other DICOM table. (Default none)
<i>split_multiframe= flag</i>	Always split multi-frame files in separate DICOM files containing only 1 image each (=1), or try to create multi-frame DICOM files (=0). (Default value is 0)
<i>fixed_seq_size= flag</i>	DICOM supports 2 ways of specifying the length of sequences and items: with a fixed length (=1), or with an undefined length and seq/item delimiter tags (=0). (Default value is 0)
<i>create_elem_0000= flag</i>	In the latest version of the DICOM standard, the tag "0000", "group length", has been retired. If you wish to create this element nevertheless, use value=1. (Default value is 0)

*create\_contributing\_equip= flag* Do we create the Contributing Equipment Sequence (0018,A001)? If you wish to create this sequence, use value=1. (Default value is 1)

## 6.7 Page 7: The “Kept” directory parameters

*kept= flag* Keep original files flag. If set (=1), the original will be transferred/copied to the "kept\_dir". (Default value is 0)

*kept\_dir= dir\_name* A copy (if keep: 1) of the files is sent to "keep\_dir".

## 6.8 Page 8: The “Failed” directory parameters

*fail= flag* Fail original files flag. If set (=1), the original will be transferred/copied to the "failed\_dir" if the conversion fails. (Default value is 0)

*failed\_dir= dir\_name* If the “fail” flag is set, files that could not be converted are sent to "failed\_dir". (Default value is "C:\DICOM\Failed\")

## 6.9 Page 9: The “Saved” directories

*saved = flag* Save converted files flag. If set (=1), converted images are copied to the "saved\_dir". (Default value is 0)

*saved\_dir = dir\_name* If the “fail” flag is set, converted images are copied to the "saved\_dir". (Default value is "C:\DICOM\Saved\")

*saved\_rename= value* Re-Name flag (0/1 flag). If set (name: 1), the converted file's name will be in the form:

"Exxxx\_Syyy\_lzzzz.dcm"

xxxx is the study name

yyy is the series number

zzzzz is the image number.

If the acquisition number is not null, "I" will be replaced by a character from "A" (for acq.=1) to "Z" (for acq.=26)  
(Default value is 0)

*saved\_tree= value*

When saving converted images, the program can create subdirectories for each study/series it encounters. Values can be 0, 1, 2, 3, 11, 12 or 13 (default value is 1) where:

0 = no subdirectory

1-3 = subdirectory for each study

11-13 = subdirectory for each series and each study.

With options 1 or 11, the study directory's name is created from the study ID or study number.

With options 2 or 12, the study directory's name is created from the patient's ID.

With options 3 or 13, the study directory's name is created from the patient's name.

(Default value is 3).

## 6.10 Page 10: The DICOM Push parameters

*AET\_snd= string*

the Application Entity Title of the sender. (Default value is DICOM\_Connect)

The program can push images to 4 SCP servers. The following parameters are defined for each of these. Replace "n" by 1, 2, 3 or 4.

*server\_on\_n = flag*

Enable (=1) or disable (=0) each of the 4 SCP servers. (Default value is 0)

*server\_AET\_n = string*

The Application Entity Title of the SCP. (Default value is ANY\_SCP)

*server\_peer\_n = string*

Name of the SCP server' computer. It can also be the URL address of the server. (Default value is "unknown")

*server\_port\_n = value*

Port number used by the SCP. (Default value is 104)

## 6.11 Page 11: The DICOM Print parameters

*dcmpsprt= string...*

Everything on the line following the "dcmpsprt:" keyword is placed in a character string and is used as optional arguments that are passed on to the dcmpsprt program. (See the dcmpsprt documentation for the available arguments and their descriptions.)

## 6.12 Page 12: The FTP Push parameters

The program can push images to 4 FTP servers. The following parameters are defined for each of these. Replace "n" by 1, 2, 3 or 4.

*ftp\_out\_on\_n = flag*

Enable (=1) or disable (=0) each of the 4 FTP push operations individually. (Default value is 0)

*ftp\_out\_server\_n = string*

name or URL address of the target FTP server.

*ftp\_out\_port\_n = value*

port used by the FTP server.

*ftp\_out\_username\_n = string*

user name used to login in the server.

*ftp\_out\_password\_n = string*

password used to login in the server.

*ftp\_out\_path\_n = string*

path to the directory where you want to place the images.

### **WARNING:**

The password is not encrypted. Anybody who can read the .ini file will have access to the password information.

*ftp\_rename= value*

Re-Name flag (0/1 flag). If set (name: 1), the converted file's name will be in the form:

"Exxxx\_Syyy\_lzzzz.dcm"

xxxx is the study name

yyy is the series number

zzzzz is the image number.



If the acquisition number is not null, "I" will be replaced by a character from "A" (for acq.=1) to "Z" (for acq.=26)  
(Default value is 0)

*ftp\_tree= value*

When creating converted images, the program can create subdirectories for each study/series it encounters. Values can be 0, 1, 2, 3, 11, 12 or 13 (default value is 1) where:

0 = no subdirectory

1-3 = subdirectory for each study

11-13 = subdirectory for each series and each study.

With options 1 or 11, the study directory's name is created from the study ID or study number.

With options 2 or 12, the study directory's name is created from the patient's ID.

With options 3 or 13, the study directory's name is created from the patient's name.

(Default value is 3).

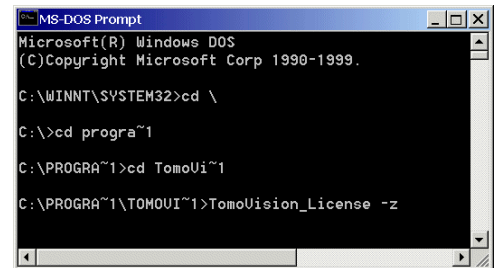


# Appendix A: Using command line arguments

You may need to use command line arguments to enable some of the options of a program. There are 3 ways to do this:

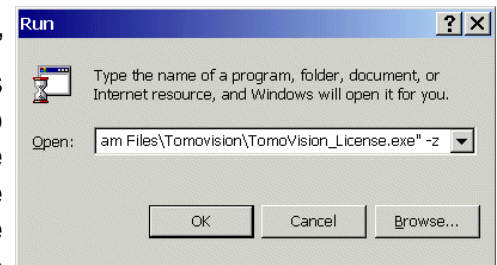
## A.1 Start the program from a DOS Prompt

You can type in directly the filename of the executable program, followed by the options, in a DOS Prompt window.



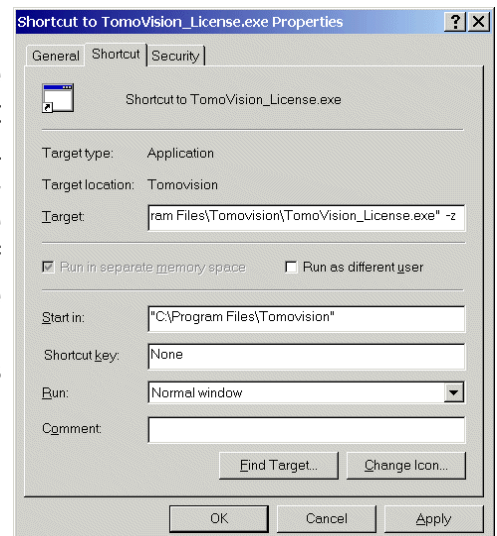
## A.2 Start the program from the “Run” window

From Windows “Start” menu, select the “Run” option to open the “Run” window. In this window, you can use the “Browse...” button to browse the file structure until you find the program (by default TomoVision’s programs are installed in C:\Program Files\TomoVision). The program’s path and name will be placed in the “Open” field. You can then add the arguments you wish to use after the quotes in the “Open:” field (-z in this example).



## A.3 Start the program from a shortcut

With this technique, the command line arguments will be present each time you start the program from the shortcut. First, create a shortcut to the executable program by right-clicking on its icon and selecting the “Create Shortcut” option. Then, edit the “Target” field of the shortcut properties by right-clicking on the shortcut and selecting the “Properties” option. Under the “Shortcut” tab, add the arguments after the quotes in the Target field.



## A.4 This module's command line arguments

The available command line arguments for DICOM\_Watch are:

DICOM\_Watch [-t *val*] [-v] [-x *pos dim*] [-y *pos dim*] [-z]

where:

-t *val* Trace mode, *val* must be between 1 and 5. This will force readOmatic to create a trace file in the scratch directory. This file can be used by TomoVision for debugging purposes. Level 5 generates a much more detailed trace than level 1.

**Note:**

You can also place the program in trace mode by pressing the control key ("Cntrl") simultaneously with a number key. Key "0" disables the trace, keys "1" to "5" place the program in trace level 1 to trace level 5.

-v Open a window with the program's version and compilation date.

-x *pos dim* Starting horizontal position and dimension of the DICOM\_Watch window.

-y *pos dim* Starting vertical position and dimension of the DICOM\_Watch window.

## Appendix B: template character replacements

Some fields can accept templates to match one or multiple files. They use a “wild cards” syntax similar to the one used by UNIX:

- ?** replaces one character  
ex: `toto_?` Will match `toto_1`, `toto_a` but not `toto` or `toto_12`
- \*** replaces 0 to many characters  
ex: `toto_*` Will match `toto_1`, `toto_a`, `toto_12` but not `toto`
- [abc]** replace one character by a, b or c  
ex: `toto_[12]` Will match `toto_1`, `toto_2` but not `toto_a` or `toto_12`
- [!abc]** replace one character by any character but a, b or c  
ex: `toto_[!12]` Will match `toto_1` but not `toto_1` or `toto_2`
- [a-c]** replace one character by a character from a to c  
ex: `toto_[0-9]` Will match `toto_1` and `toto_2` but not `toto_a` or `toto_12`

The wild card will only match a file name or its extension, not both at the same time. So, to match all the files in a directory you need `*.*`  
ex: `*.ima` Will match `toto.ima` but not `toto.dat`

The wild cards character are only valid in 1 directory. They will not match any directory or sub-directory.  
ex: `.\toto\*.*` will match all the files in the `.\toto` directory, but it will not match the files in `.\toto\sub_dir` directory.